

E12 01	DUCT BANK (SECONDARY SERVICE)
	DETAIL
	NO SCALE

E12 06	CABLE TERMINATION
	DETAILS
	NO SCALE

E12 02	DUCT BANK (PRIMARY SERVICE)
	DETAIL
	NO SCALE

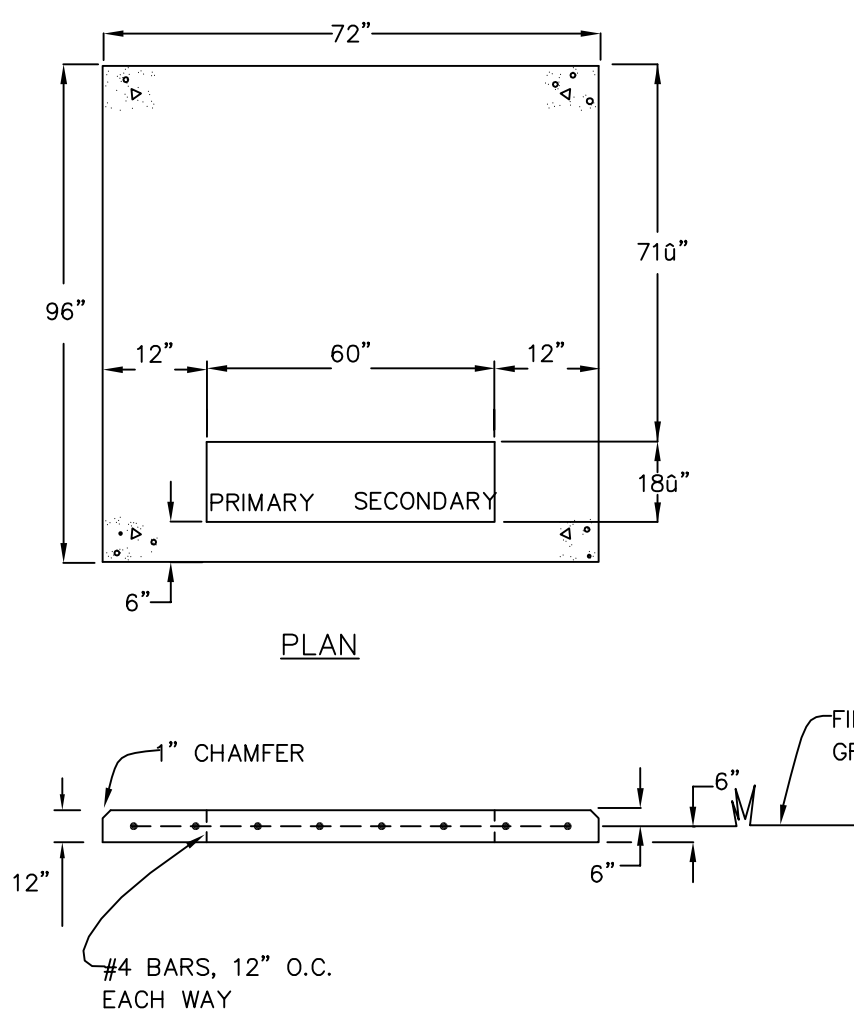
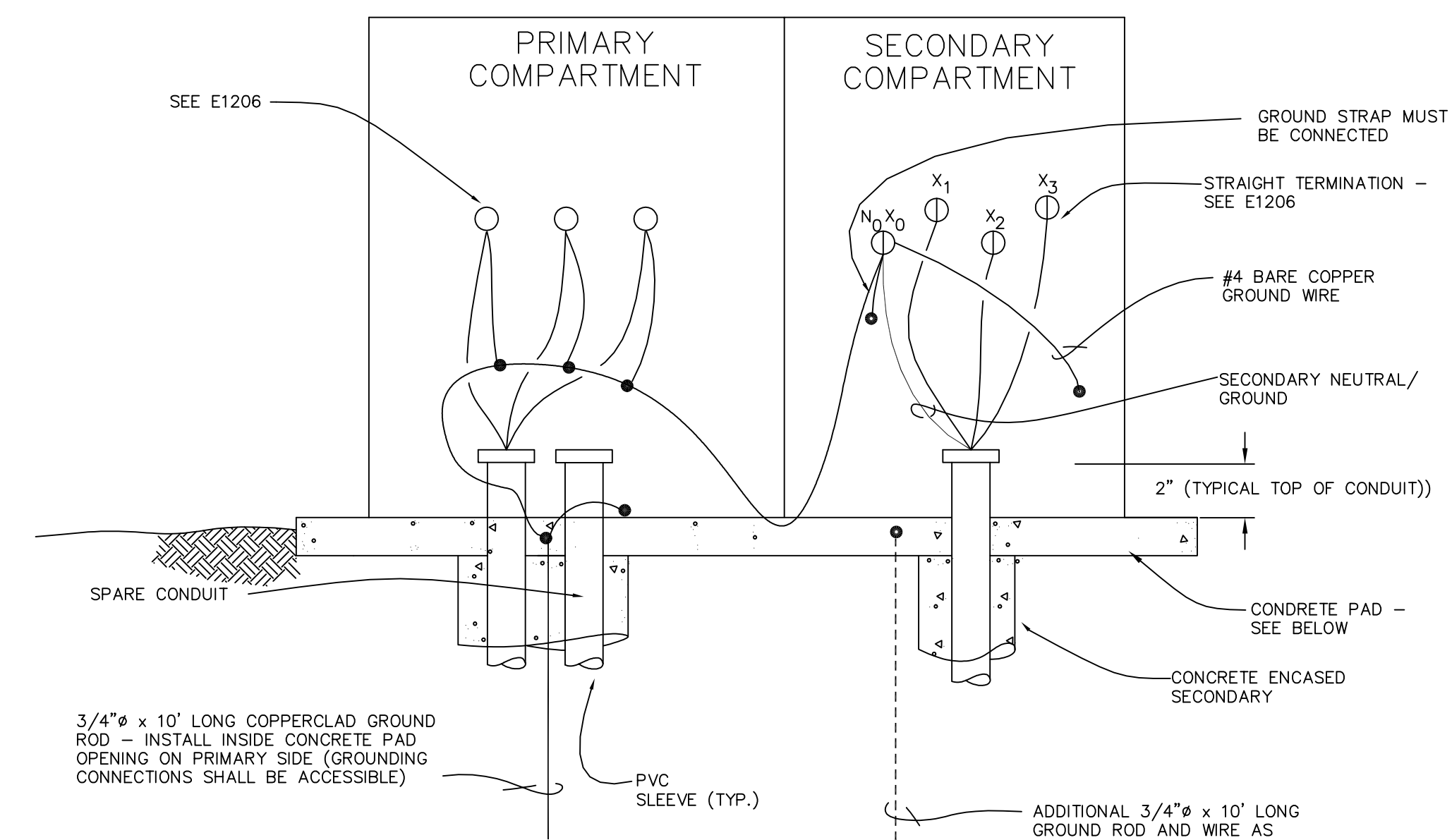
E12 07	DUCT BANK ( COMMUNICATIONS
	DETAIL
	NO SCALE

E12 03	MANHOLE
	DETAIL
	NO SCALE

E12 03	MANHOLE
	DETAIL
	NO SCALE

- ### TRANSFORMER GROUNDING NOTES
1. THE PRIMARY NEUTRAL CONDUCTOR MUST BE BONDED CONTINUOUSLY TO THE PRIMARY CONDUIT (IF METALLIC), THE GROUND ROD, TRANSFORMER TANK GROUND PAD IN THE PRIMARY COMPARTMENTS, AND THE HO/XO NEUTRAL BUSHING – THIS STEP SHALL BE REPEATED IF LOOP FEED TRANSFORMER
  2. STRESS CONES AND PRIMARY CABLE SHIELD MUST BE GROUNDED TO NEUTRAL CONDUCTOR – THIS STEP SHALL BE REPEATED IF LOOP FEED TRANSFORMER
  3. 144 COPPER GROUND WIRE SHALL BE BONDED TO HO/XO BUSHING, TO GROUND PAD IN SECONDARY COMPARTMENT, TO SECONDARY CONDUIT (IF METALLIC), AND TO GROUND ROD
  4. GROUND STRAP MUST CONNECT HO/XO BUSHING TO TRANSFORMER TANK
  5. A SUITABLE, FLEXIBLE #6 COPPER ARRESTOR LEAD SHALL BE INSTALLED FROM EACH ARRESTOR DIRECTLY TO GROUND ROD (NOT SHOWN)
  6. PRIMARY AND SECONDARY CONDUITS SHALL EXTEND TWO INCHES ABOVE CONCRETE PAD
  7. IF RESISTANCE OF GROUND ROD EXCEEDS 25 OHMS, INSTALL ADDITIONAL GROUND ROD MINIMUM 10' AWAY – INNER-CONNECT GROUND RODS USING #14 COPPER WIRE
  8. COMPLETE INSTALLATION MUST BE IN COMPLIANCE WITH THE NATIONAL ELECTRICAL SAFETY CODE, ANSI C2

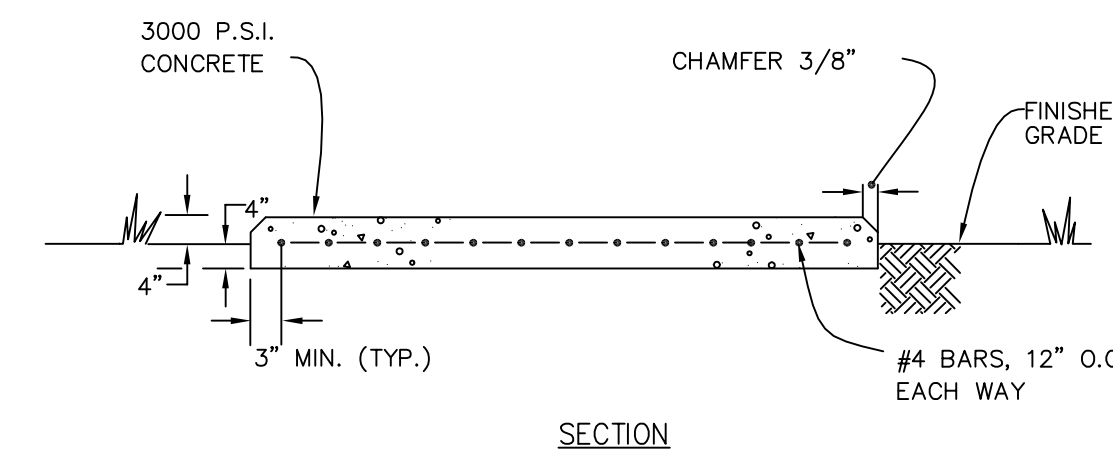
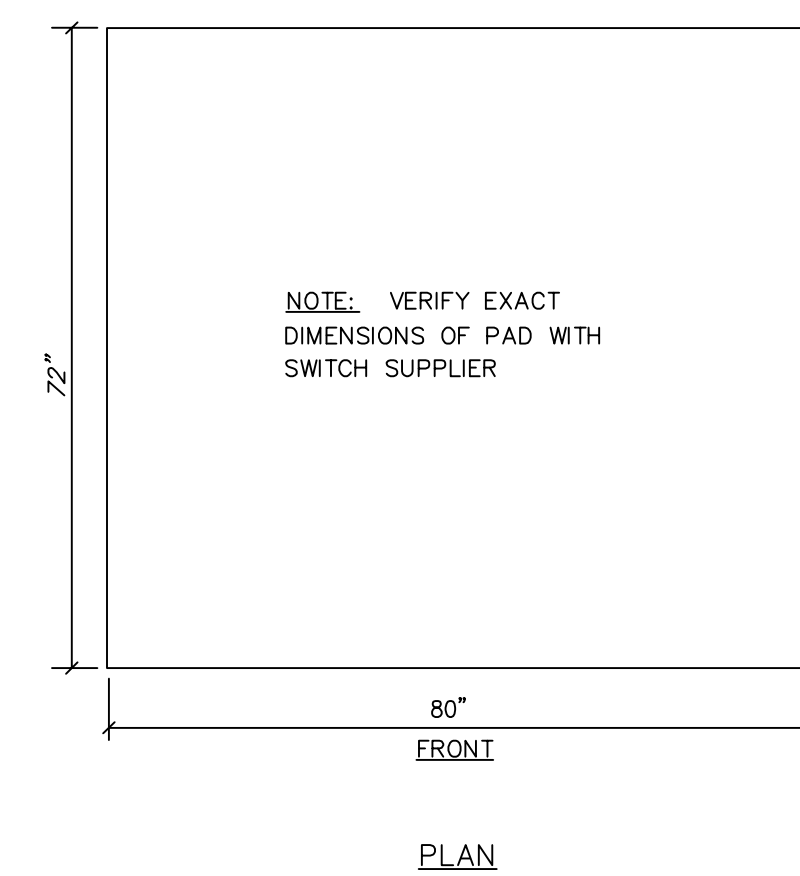
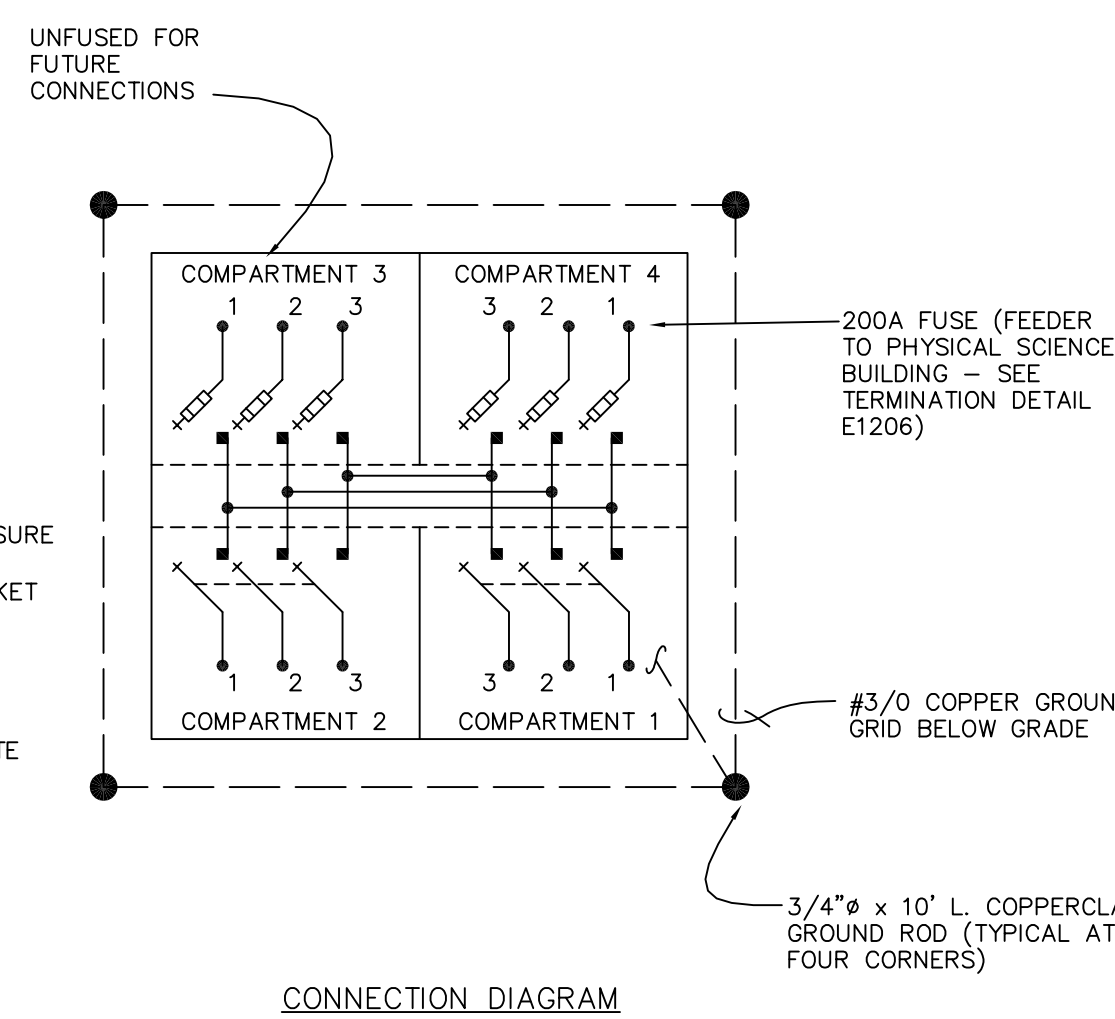
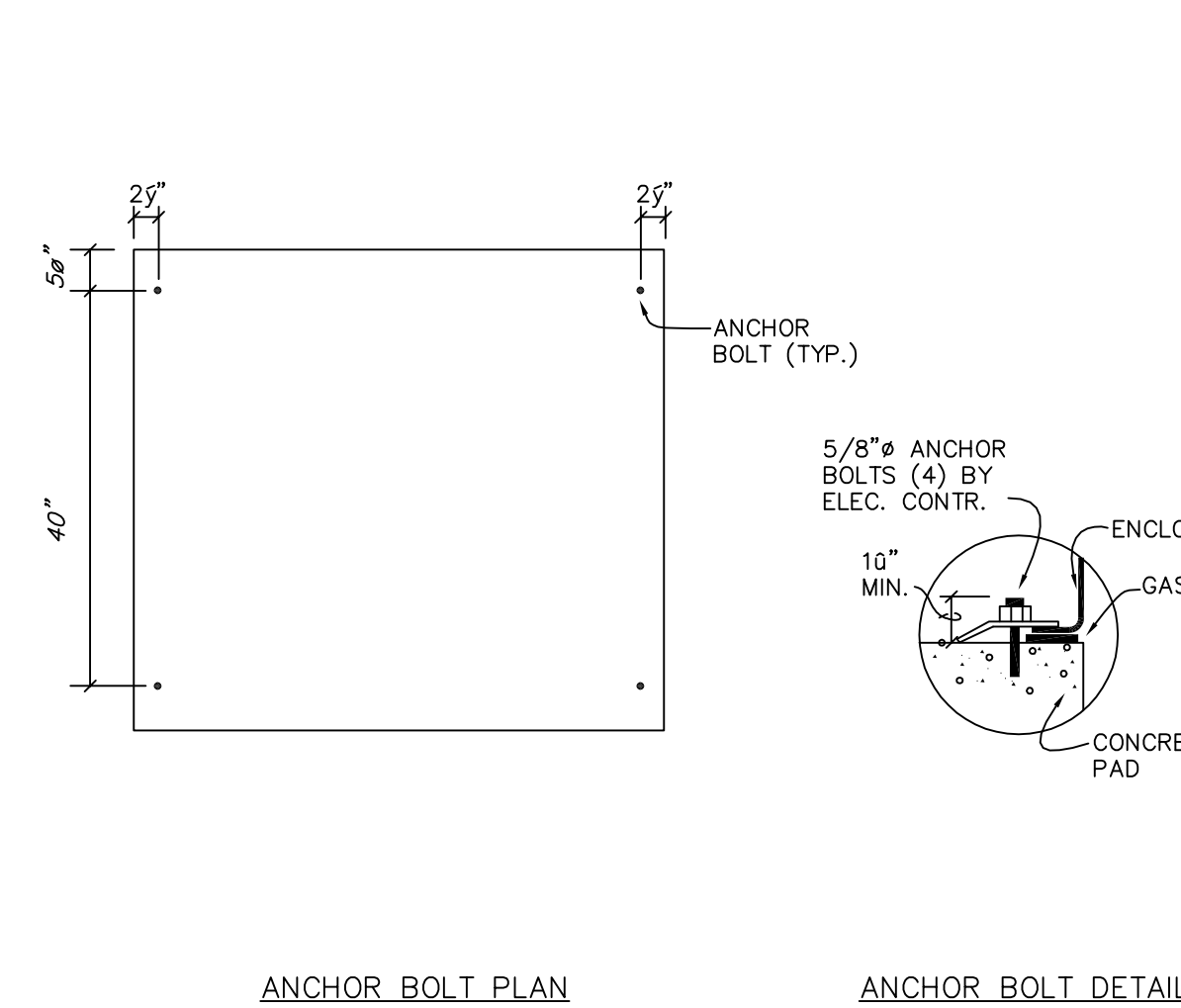
2500 KVA, 15 KV PRIMARY  
277/480 VOLT, 3 PHASE, 4  
SECONDARY



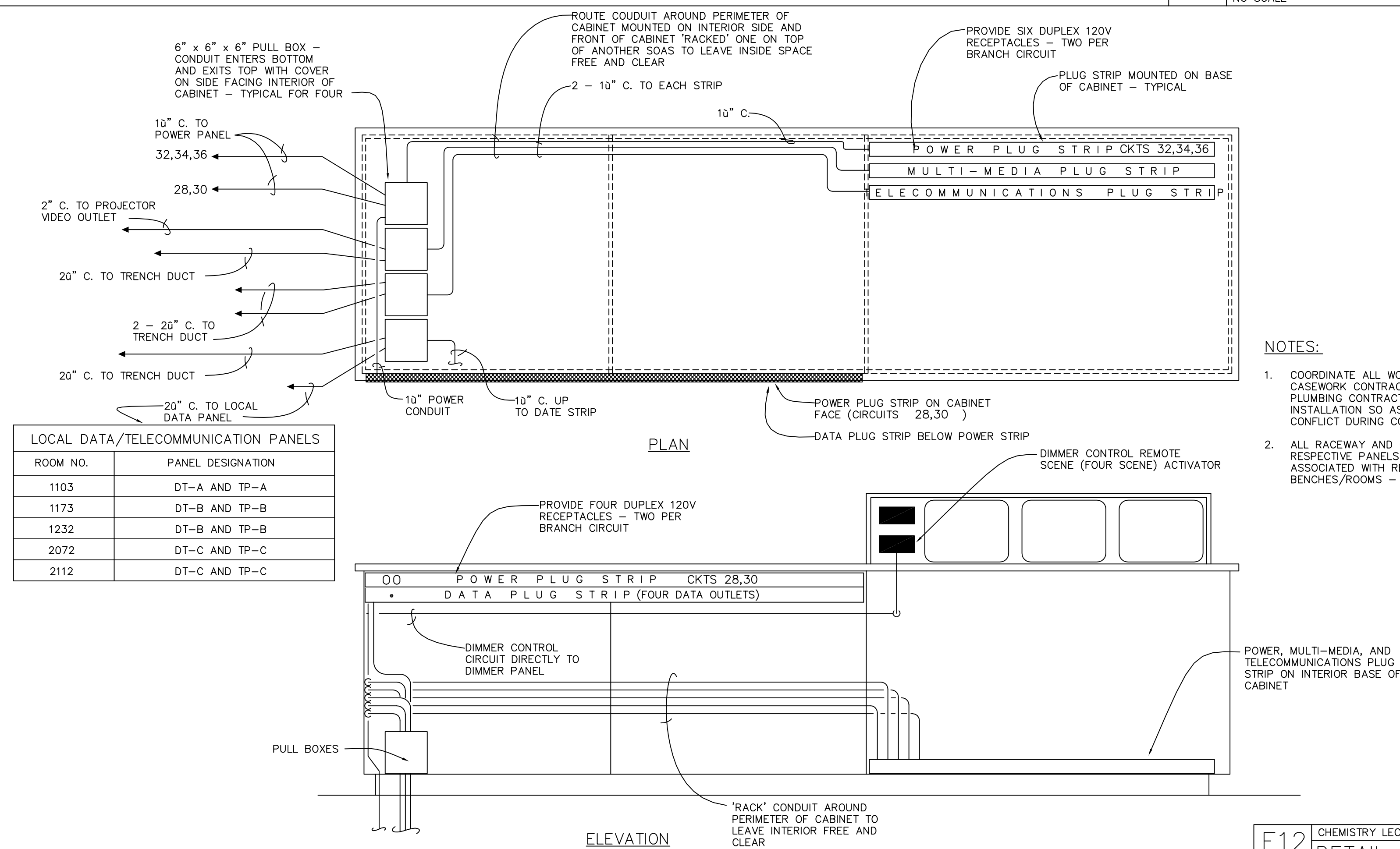
- ## TRANSFORMER PAD NOTES
1. CONCRETE SHOULD BE 5 1/2% AIR ENTRAINED, 3000 PSI MINIMUM PLACED AND COMPACTED ON UNDISTURBED EARTH OR 96% COMPACTED FILL - ALL EXPOSED SURFACES OF PAD SHALL BE FREE OF VOID AND TRAVELLED SMOOTH WITH A 1" CHAMFER APPLIED TO ALL EXPOSED EDGES
  2. ELECTRICAL CONTRACTOR TO VERIFY EXACT DIMENSIONS OF PAD WITH TRANSFORMER MANUFACTURER
  3. INCREASE WIDTH AND LENGTH DIMENSIONS BY 6" TO PROTECT TRANSFORMER FROM LAWN MOWERS

SECTION

E12 04	TRANSFORMER BONDING (TYPICAL)
	DETAIL
	NO SCALE

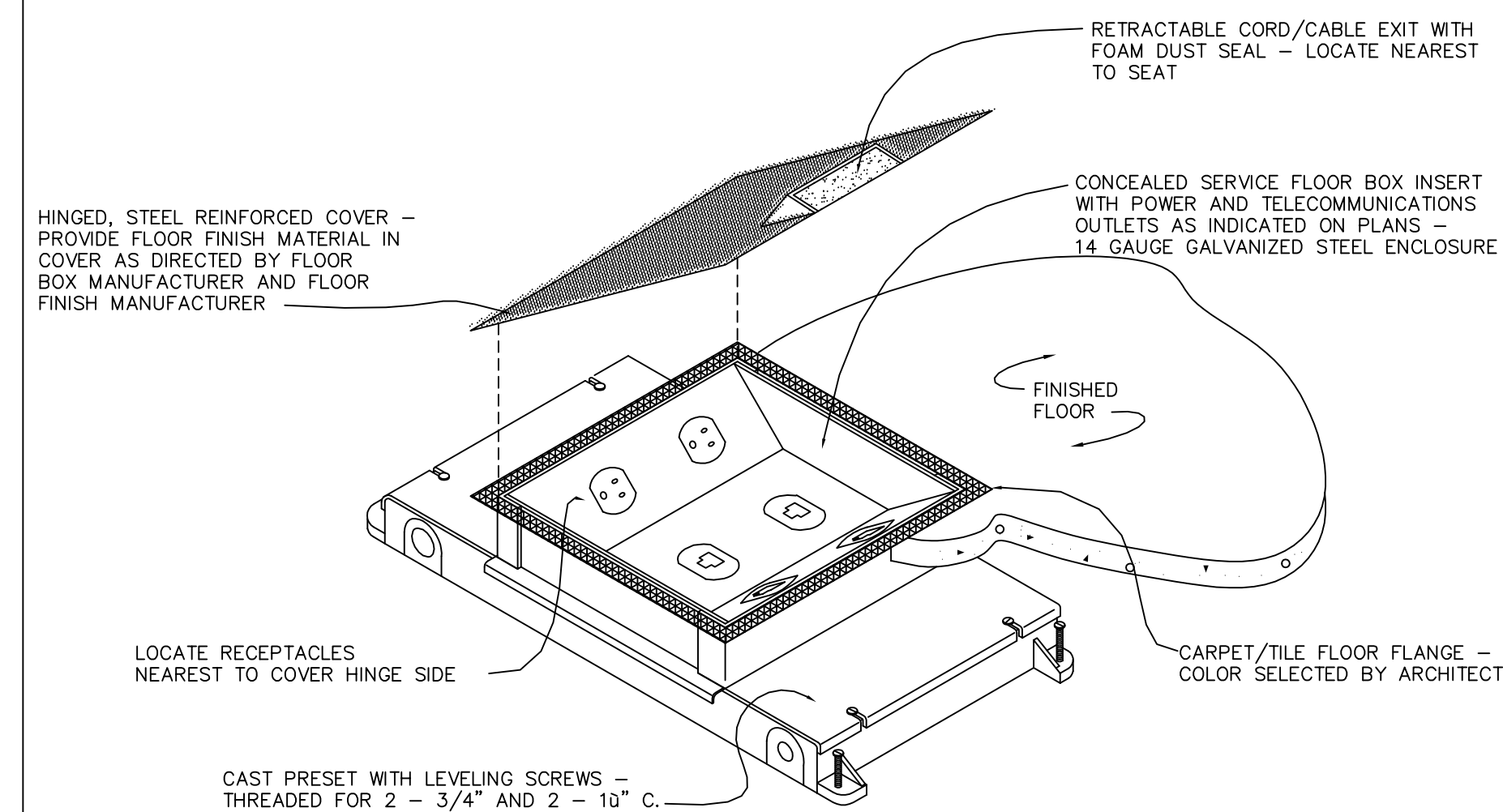


E12 05	SECTIONALIZING SWITCH /
	DETAIL
	NO SCALE

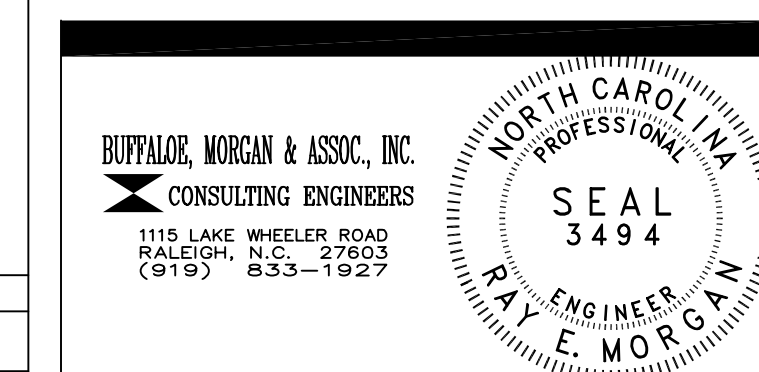


NOTES:

1. COORDINATE ALL WORK CLOSELY WITH CASEWORK CONTRACTOR, HVAC AND PLUMBING CONTRACTORS PRIOR TO INSTALLATION SO AS TO AVOID ANY CONFLICT DURING CONSTRUCTION
2. ALL RACEWAY AND CIRCUITRY ROUTE THROUGH RESPECTIVE PANELS AND RACEWAYS ASSOCIATED WITH RESPECTIVE LECTURE BENCHES/ROOMS - SEE PLANS



E12	LECTURE ROOM FLOOR BOX
	CONCEALED SERVICE FLOOR BOX
08	DETAIL
	NO. SCALE



DRAWING REVISIONS:		
NO.	DATE:	REMARKS:

DATE: 16 MAY 1994  
PROJECT#: 9305  
DESIGNED BY: SAE  
DRAWN BY: DDS, SMO  
CHECKED BY: SAE  
CHECKED BY: REM

SHEET TITLE:

## DETAILS

SHEET NO.:

E12

OF 17